

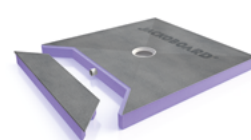
# JACKOBOARD®

## Aqua Reno & Reno Line



**Save time on site**

The shower tray range  
**with integrated drainage**



**LINEAR OR GRATE**

# Streamline your bathroom renovations

featuring the **integrated drainage system**



An intelligent solution for

**hassle-free renovations**

## WHY CHOOSE JACKOBOARD® AQUA RENO OR AQUA RENO LINE?

**STANDARD**  
OR  
**BESPOKE**

Here are **6 good reasons!**

- |          |   |          |  |
|----------|---|----------|--|
| <b>1</b> | <b>Integrated horizontal drainage system housed within the tray</b> | <b>2</b> | <b>Ultra-fast and simplified installation</b>  |
| <b>3</b> | <b>Low installation height</b><br>perfect for renovation projects   | <b>4</b> | <b>Cut-to-size, tile-ready tray</b>  |
| <b>5</b> | <b>Guaranteed watertightness,</b><br>simply connect and go          | <b>6</b> | <b>Elegant and practical solution</b> accessible (DDA compliant), stylish and barrier-free |



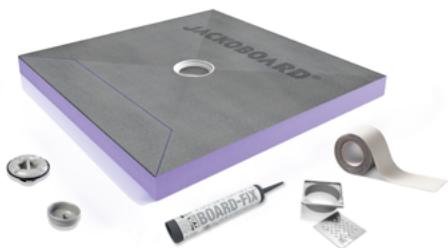
# One concept, two styles

## You simply connect and go !

Grate or channel :  
a flush-fit shower solution,  
ready to install

### JACKOBOARD® Aqua Reno

Grate version featuring  
access hatch for faster  
installation.



4-way fall



centred



### JACKOBOARD® Aqua Reno Line

Tiled or open channel  
featuring dual slope for  
smooth drainage.



2 way fall



offset



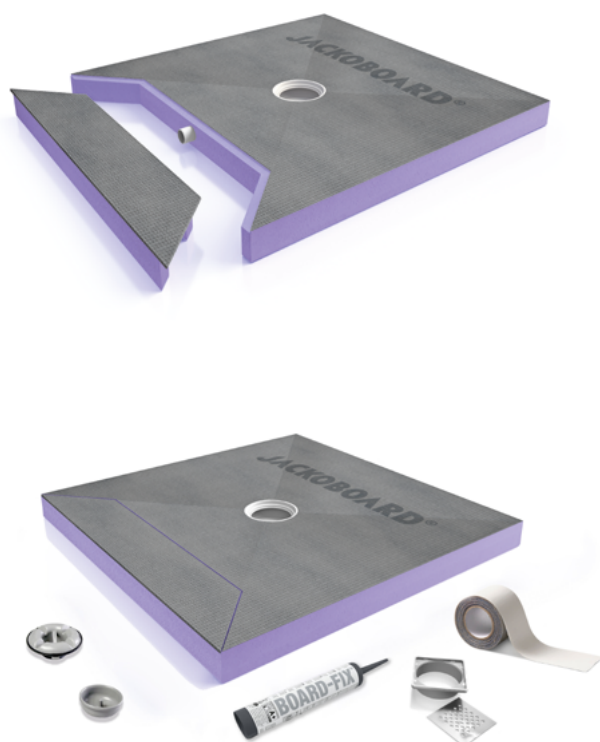
tileable drainage  
channel





JACKOBOARD®

## The all-in-one solution for barrier-free showers in existing buildings

- Drainage system integrated into the shower tray body
- Supplied with drain connector, specialist adhesive and sealing kit
- Comes with a high-end designer grate made of solid stainless steel
- Coating from 9 mm (tiles + adhesive)
- Drainage flow capacity: 0.5 l/s
- Water trap height: 22 mm



**Overall installation  
height from 65 mm**

 **4-way fall**  **centred**

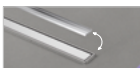
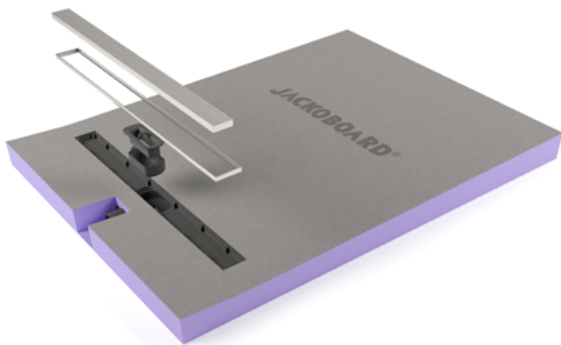
Ref.	EAN code	Height mm	Dimensions mm	Drain centre from the edge	Box contents
4512256	40 25345 09790 0	65	900 x 900	450 / 450	1
4514798	40 25345 11063 0	65	1200 x 900	450 / 450	1
4512257	40 25345 09791 7	65	1400 x 900	450 / 450	1
4512258	40 25345 09792 4	75	1800 x 900	450 / 450	1

*Custom dimensions available on request*



The dual-slope tray  
for maximum safety

- Integrated, sealed drainage channel with integrated horizontal drainage sleeve with drainage system
- Counter-slope on the outer side of the channel improves drainage flow rate
- Drainage flow rate: 0.52 l/s
- Reversible grate for a stainless-steel or tiled finish



tileable drainage  
channel

Overall installation  
height from 82 mm



2-way fall



offset

Ref.	EAN code	Height mm	Dimensions mm	Box contents
4528992	40 25345 15894 6	82/74	900 x 900	1
4528993	40 25345 15895 3	82/74	1200 x 900	1
4528994	40 25345 15896 0	87/74	1800 x 900	1

Custom dimensions available on request

**JACKON Insulation GmbH**

Carl-Benz-Straße 8  
D-33803 Steinhagen

**E** [info@jackodur.com](mailto:info@jackodur.com)

**W** [www.jackon-insulation.com](http://www.jackon-insulation.com)

