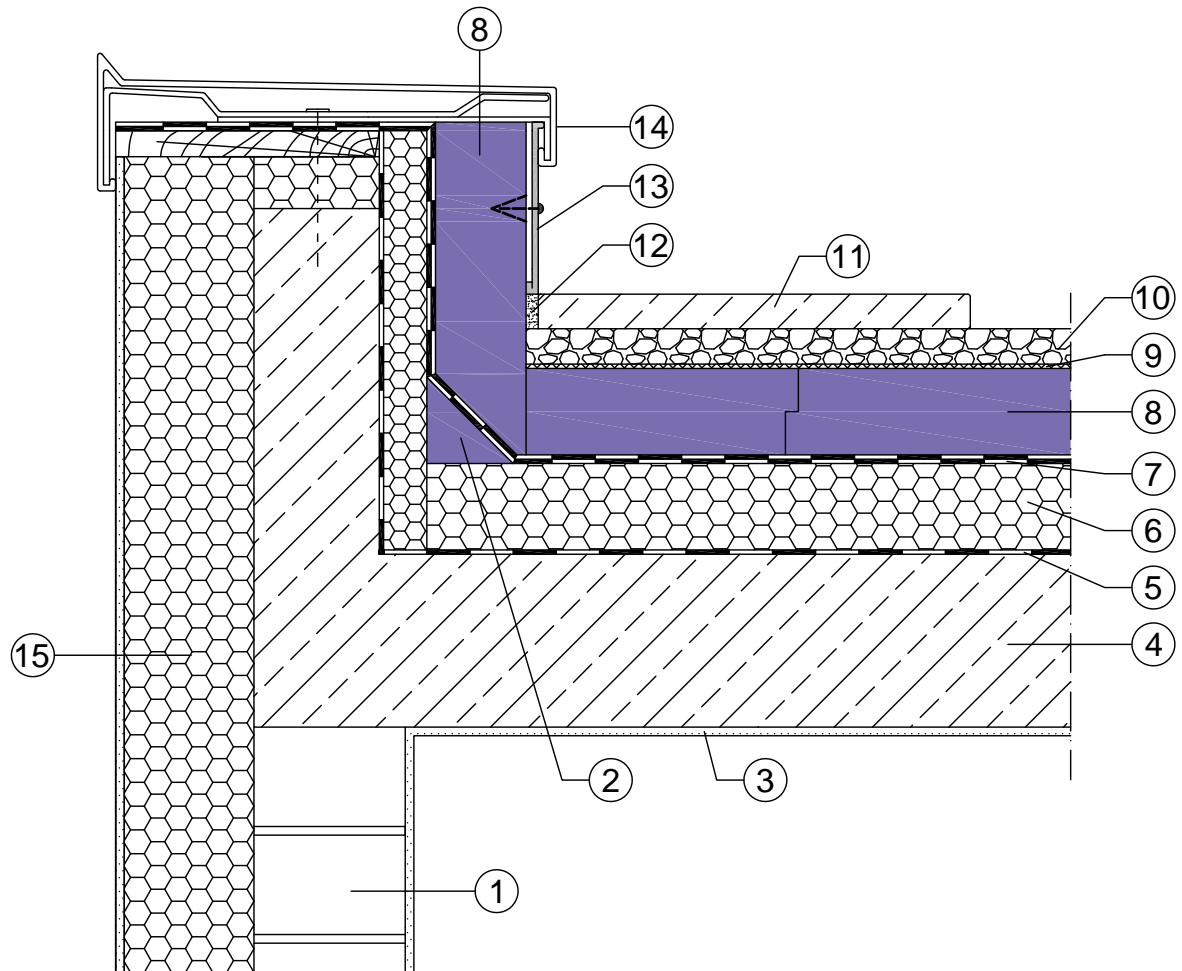



## Roof edge detail - duo / plus roof



- |   |  |
|---|--|
| ① Masonry with internal plaster   | ⑩ Gravel   |
| ② JACKODUR® Angle fillet  | ⑪ Concrete slab  |
| ③ Interior plaster  | ⑫ Fill sand  |
| ④ Reinforced concrete ceiling   | ⑬ Wall connection bar with insulation fixing and metal screw |
| ⑤ Bituminous vapour barrier   | ⑭ Metal cover with retainer doweled on wooden plank          |
| ⑥ Existing insulation   | ⑮ ETICS  |
| ⑦ Double layer of Waterproofing, first layer with cold-self adhesive membrane |  |
| ⑧ JACKODUR® Plus 300 Standard SF  |  |
| ⑨ JACKODUR® Filter layer WA   |  |

System	Roof	<p>Note: The information in this drawing represents our current state of knowledge and experience. They do not represent any guarantee in the legal sense of the term. When using these products, the specific conditions relative to the particular application must always be taken into account, especially with regard to structural physics, civil engineering and statutory building regulations.</p>	 www.iackon-insulation.com
Date	04/2018		
Detail	03-003		