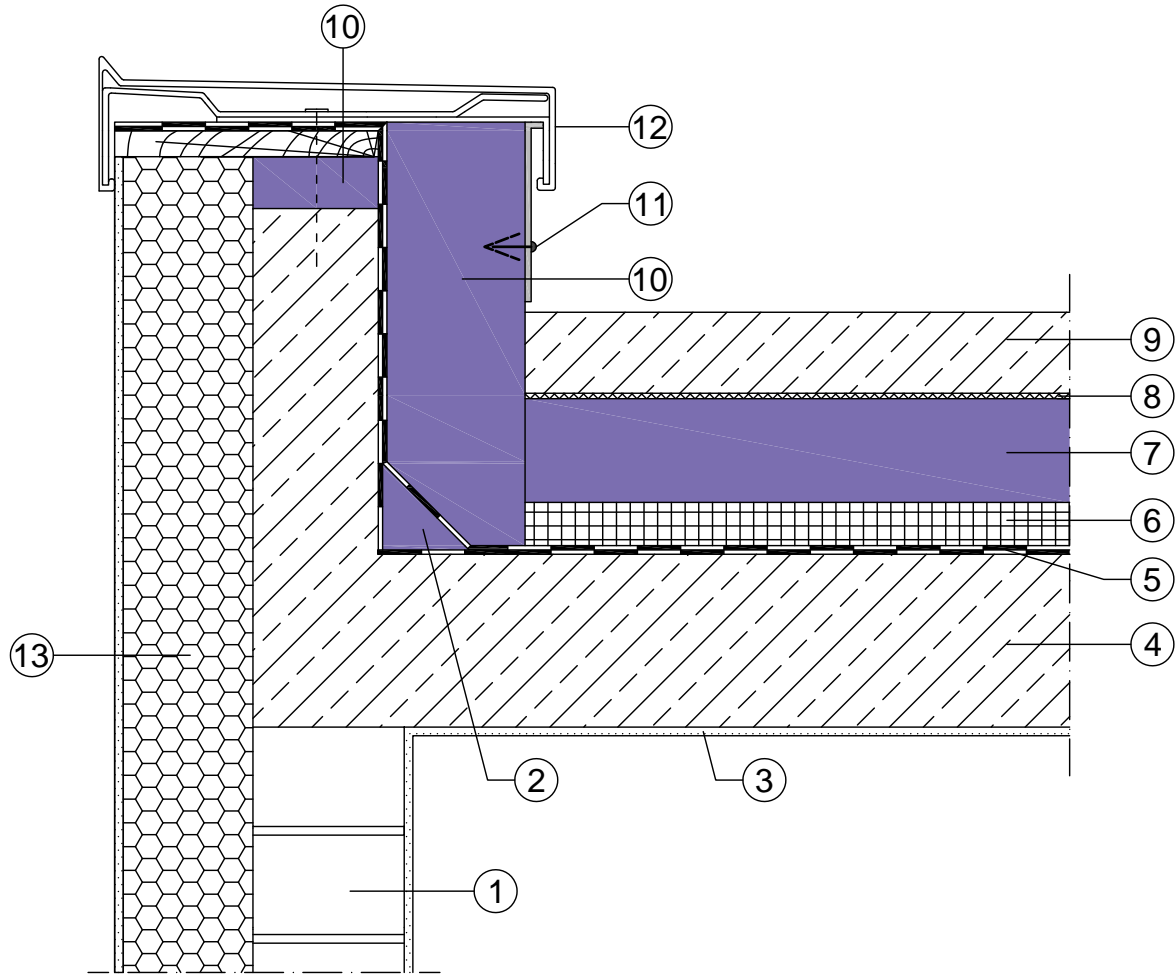



Roof edge detail - parking roof with site concrete driving surface



- | | |
|---|--|
| ① Masonry with internal plaster | ⑩ JACKODUR® KF 300 Standard SF |
| ② JACKODUR® Angle fillet | ⑪ Wall connection bar with insulation fixing and metal screw |
| ③ Interior plaster | ⑫ Metal cover with retainer doweled on wooden plank |
| ④ Reinforced concrete ceiling | ⑬ ETICS |
| ⑤ Double layer of waterproofing with primer | |
| ⑥ Mastic asphalt | |
| ⑦ JACKODUR® KF 500/700 Standard SF | |
| ⑧ JACKODUR® Filter layer WA | |
| ⑨ Site concrete | |

System	Roof	<p>Note: The information in this drawing represents our current state of knowledge and experience. They do not represent any guarantee in the legal sense of the term. When using these products, the specific conditions relative to the particular application must always be taken into account, especially with regard to structural physics, civil engineering and statutory building regulations.</p>	 www.iackon-insulation.com
Date	04/2018		
Detail	03-001		