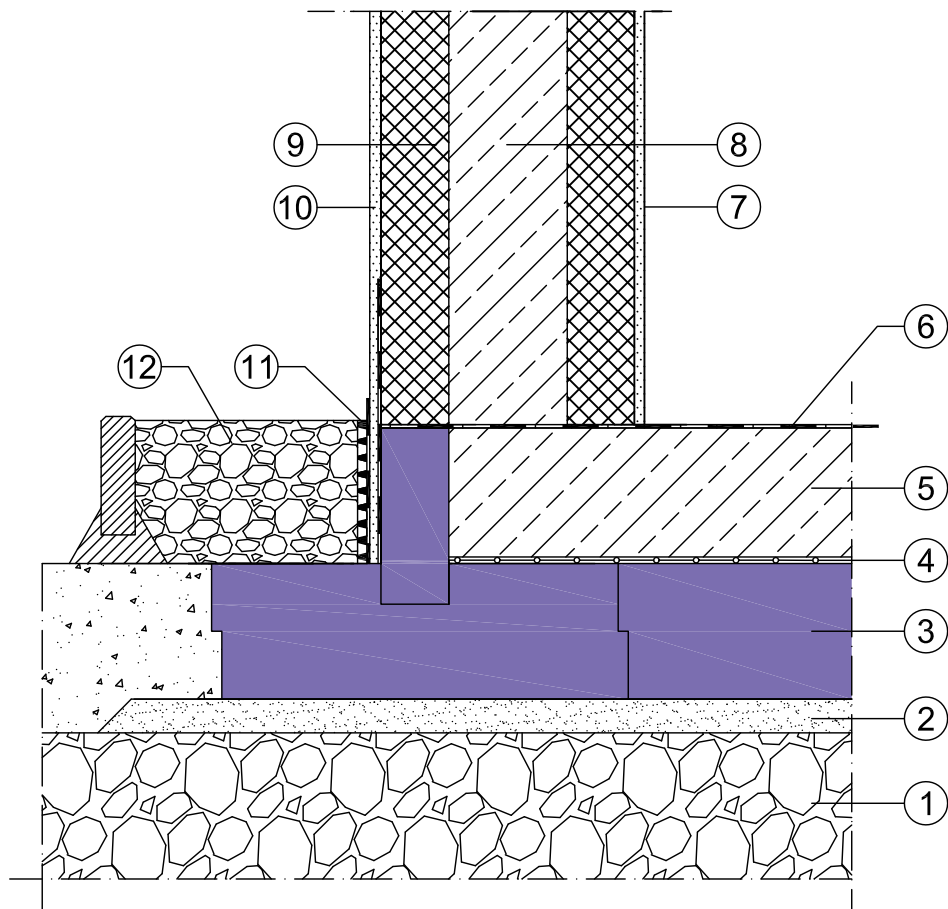



## JACKODUR® Atlas in connection with THERMOMUR insulated concrete form (ICF) system



- |  |   |
|--|---|
| ① Crushed stone layer<br>e.g. 0/45 or 0/63 | ⑦ Plasterboard  |
| ② Leveling layer e.g. gritt 4/8            | ⑧ Concrete core                                       |
| ③ JACKODUR® Atlas                          | ⑨ THERMOMUR (ICF)                                     |
| ④ PE film                                  | ⑩ Exterior Render                                     |
| ⑤ Foundation slab                          | ⑪ Cement-based waterproof coating<br>and dimple sheet |
| ⑥ Waterproofing                            | ⑫ Filter gravel 16/32 mm                              |

System	Perimeter JACKODUR® Atlas	<p>Note: The information in this drawing represents our current state of knowledge and experience. They do not represent any guarantee in the legal sense of the term. When using these products, the specific conditions relative to the particular application must always be taken into account, especially with regard to structural physics, civil engineering and statutory building regulations.</p>	 <a href="http://www.jackon-insulation.com">www.jackon-insulation.com</a>
Date	06/2019		
Detail	01-029		