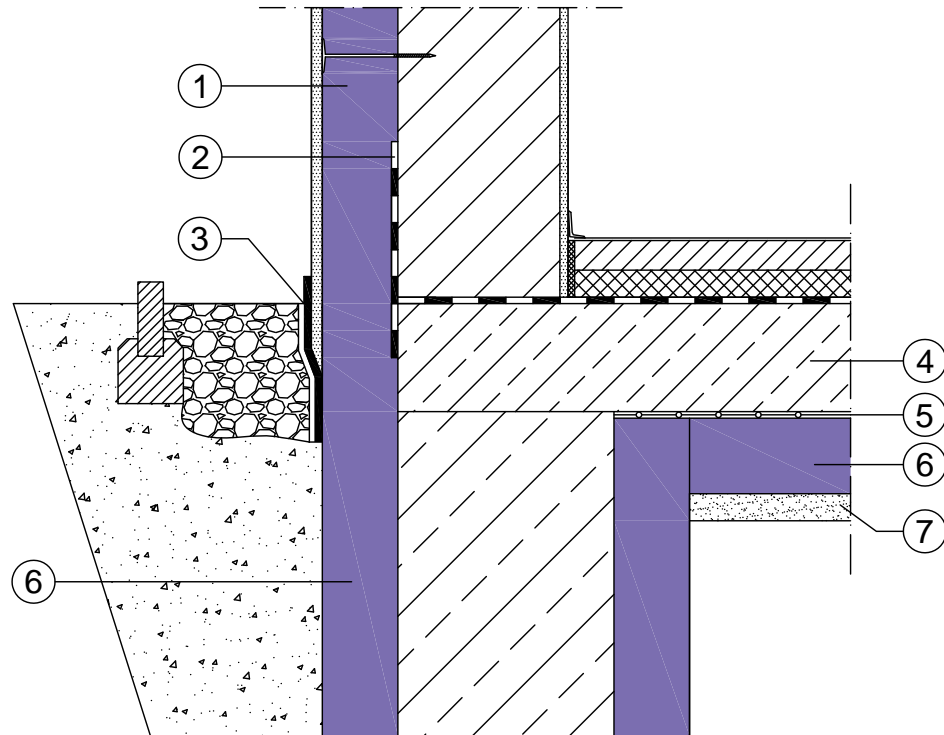



Base plate with strip foundation



- ① JACKODUR® Gefiniert
- ② Structural waterproofing
- ③ Waterproofing grout with dimple sheet
- ④ Base plate
- ⑤ PE film
- ⑥ JACKODUR® KF 300 Standard
- ⑦ Leveling layer

| | | | |
|--------|-----------|---|---|
| System | Perimeter | <p>Note: The information in this drawing represents our current state of knowledge and experience. They do not represent any guarantee in the legal sense of the term. When using these products, the specific conditions relative to the particular application must always be taken into account, especially with regard to structural physics, civil engineering and statutory building regulations.</p> |  |
| Date | 04/2018 | | |
| Detail | 01-001 | | |
| | | | www.iackon-insulation.com |